

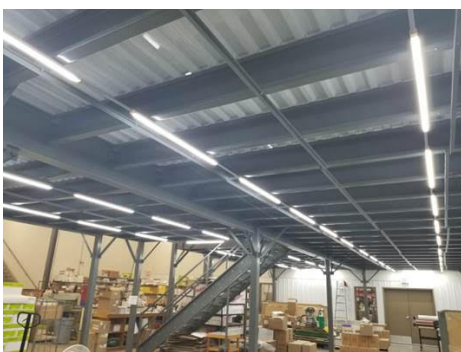
**Lowest Cost, Highest LPW, Fastest Install and Highest Rebates in the Market.**

**DLC Standard** listed “Direct Linear Ambient Luminaires” delivers 4989 lumens of enhanced spectrum 83+ CRI light with 139 lumens per watt - as measured through the frosted lens.

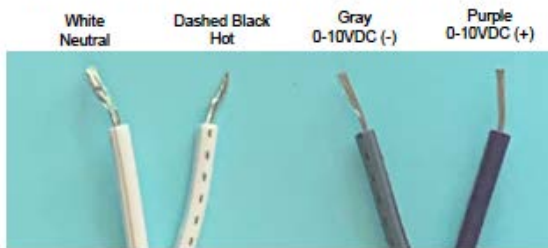
| Model<br>XXX-Kelvin | Kelvin ^          | 0-10VDC Dimming | Watts | Lumens/ LPW<br>(5000K) |
|---------------------|-------------------|-----------------|-------|------------------------|
| LMK418-DIM-F-XXXX-2 | 3500, 4000, 5000K | Yes             | 36    | 5780/161               |

**FOR COMMERCIAL AND INDUSTRIAL APPLICATIONS**

|   |   |   |
|---|---|---|
| <p><b>DLC Listed:</b><br/>                 ■ Direct Linear Ambient Luminaires</p> | <p><b>Dimension &amp; Weight:</b><br/>                     4' – 44.56 (L) 1.32 (W) 1.44 (H) 9 oz.</p>   | <p><b>Operating Temperature:</b> -20 to 50°C (-4 to 122°F)<br/> <b>Rated Life @ 55°C:</b> &gt;65,000 hours<br/> <b>Lumen Maintenance @ 55°C:</b> 98.89%</p>   |
|   | <p><b>Construction:</b><br/>                     Aluminum Extrusion and Polycarbonate Lens</p> <p><b>CRI:</b> 83+</p> <p><b>Rating:</b> IP51 (Damp)</p> | <p><b>THD:</b> &lt;15%    <b>Max Connected Load:</b> 4.5 Amps<br/> <b>Power Factor:</b> &gt;0.98<br/> <b>Input Voltage:</b> 120 - 277VAC<br/> <b>Beam Angle:</b> 120°<br/> <b>Warranty:</b> 7 Years</p> |



**LMK-DIM Power Whip Wiring**  
 Follow 0-10VDC Controller Manufacturers Wiring Instructions  
 If 0-10VDC dimming is not used, tape off Purple and Gray wires



Magnet mounting is only allowed behind a lens  
 Use tech screws to secure clips for exposed installations

**7 Year Non-Prorated Warranty**

**LEDSTICK**  
 COMPANY  
**(888) 927-4LED**  
[www.ledstick.net](http://www.ledstick.net)

LED Stick Company recommends Transient Voltage Surge Suppression (TVSS) on circuits controlling LED lighting. See manufacturer's warranty for details. Always check for an Open Neutral. Voltage on the neutral is dangerous and can cause LED failure and void the warranty. Dimming control is 10-100%

**赛源绿明**  
 LMenergy solution  
 LMK product worldwide is manufactured by Hangzhou LMenergy solution Lighting Co. LTD.  
 U.S. Patent Number: 9046244 / 9322532

# Hangzhou LMenergysolution Lighting Company, Ltd.

## LMK (Internal Driver) 8' Strip Fixture Retrofit Installation Instructions

### SAFETY INSTRUCTIONS AND WARNINGS

- When using electrical equipment, basic safety precautions should always be observed.
- Installation should only be conducted by a qualified electrician in accordance with NEC and any relevant local codes.
- Risk of fire or electric shock. Retrofit kit installation requires knowledge of luminaires electrical system. If not qualified, do not attempt installation. Contact a qualified electrician.
- Do not make or alter any open holes in the enclosure of wiring or electrical components during kit installation.
- To prevent wiring damage or abrasion, do not expose wiring to edges of sheet metal or other sharp objects.
- WARNING - This is a current rated device. Use in applications involving amperage beyond its rating can be dangerous and cause electrical fires.
- DANGER - Never remove wires from product as contact with electricity can cause serious injury or death. Follow NEC and Local Jurisdiction requirements when installing this kit.
- SAFETY NOTICE - Improperly installed electrical wiring can be dangerous and cause electrical fires. This product must be used in accordance with the current rating and wire sizes listed. Consult local building code before doing any electrical work.

### ADDITIONAL INFORMATION


Additional installation and warranty information may be found at [www.ledstick.net/resources](http://www.ledstick.net/resources).

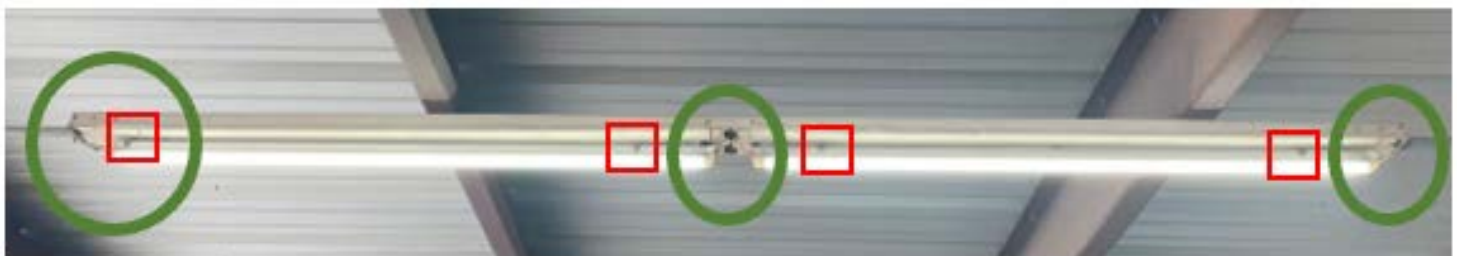
### PREPARATION - REMOVE EXISTING PARTS

1. Turn off power at the Circuit Breaker
2. Remove the existing tubes and the first belly pan cover of a run.
3. Disconnect the ballast wires from the incoming electrical line and if required, remove the ballast completely. You do not need to remove the existing tombstones.

### INSTALLING YOUR LMK STRIP FIXTURE RETROFIT

1. If using 0-10VDC dimming controller follow manufactures instructions. Connect the LM3PW-DIM power whip of the to the incoming power (110V-277V). Wire dashed black lines connects to the Hot. White to Neutral. If not using 0-10VDC dimming controller, tapeoff individual Purple and Gray wires.
2. Replace the belly pan cover.
3. Using self-tapping screws, secure two provided clips (remove magnet) to the belly pan cover, for each LMK.
4. Plug the clip end of the LM3PW power whip in to the first LMK lamp. If additional LMK lamps are to be connected, install the next two clips. Plug the LM6JW jumper whip into the opposite end of the first LMK lamp.
5. Plug the jumper whip into the second LMK and snap the second LMK into second set of LMK clips.
6. Repeat Steps 3-5 up to the total maximum 26 LMKs.

 2 x clips tec screwed to belly pan cover for each LMK  
Magnet clips are intended for use when behind a lens



Power whip  
connects to  
LMK

6" jumper  
connects LMKs

Connect  
additional  
LMKs using 6"  
jumpers

Manufactured by:  
Hangzhou LMenergysolution Lighting Company, Ltd  
Distributed by:  
LED Stick Company  
Florence, Alabama