

**T12 – T8 – T5 Replacement**  
**Low Bay Luminaire**

**LED LINEAR LIGHTING**  
 Lowest Cost - Highest LPW and Fastest Install



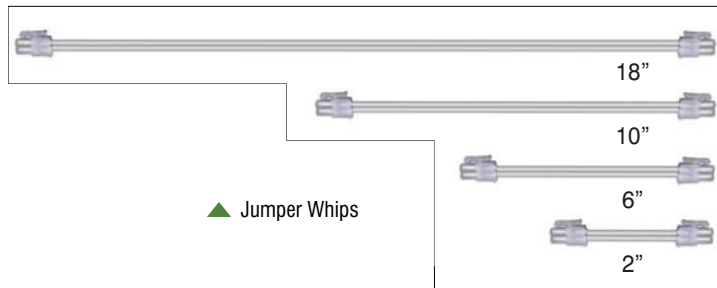
**Lowest Cost, Highest LPW, Fastest Install and Highest Rebates in the Market.**

DLC Standard listed "Low-Bay Luminaires for Commercial and Industrial Buildings" delivers 5780 lumens of enhanced spectrum 83+ CRI light with 161 lumens per watt.

Model XXX-Kelvin	Kelvin ^	0-10VDC Dimming	Watts	Lumens/ LPW (5000K)
LMK418-DIM-F-XXXX-2	3500, 4000, 5000K	Yes	36	5780/161

**FOR COMMERCIAL AND INDUSTRIAL APPLICATIONS**

<p><b>DLC Listed:</b>                  ■ Low-Bay Luminaires for Commercial and Industrial Buildings</p>	<p><b>Dimension &amp; Weight:</b>                      4' – 44.56 (L) 1.32 (W) 1.44 (H) 9 oz.</p>	<p><b>Operating Temperature:</b> -20 to 50°C (-4 to 122°F)  <b>Rated Life @ 55°C:</b> &gt;65,000 hours  <b>Lumen Maintenance @ 55°C:</b> 98.89%  <b>THD:</b> &lt;15%    <b>Max Connected Load:</b> 4.5 Amps  <b>Power Factor:</b> &gt;0.98  <b>Input Voltage:</b> 120 - 277VAC  <b>Beam Angle:</b> 120°  <b>Warranty:</b> 7 Years</p>
	<p><b>Construction:</b>                      Aluminum Extrusion and Polycarbonate Lens</p> <p><b>CRI:</b> 83+</p> <p><b>Rating:</b> IP51 (Damp)</p>	



**LEDSTICK**  
 COMPANY  
**(888) 927-4LED**  
[www.ledstick.net](http://www.ledstick.net)

**7 Year Non-Prorated Warranty**

LED Stick Company recommends Transient Voltage Surge Suppression (TVSS) on circuits controlling LED lighting. See manufacturer's warranty for details. Always check for an Open Neutral. Voltage on the neutral is dangerous and can cause LED failure and void the warranty. Dimming control is 10-100%

**赛源绿明**  
 LMenergy solution  
 LMK product worldwide is manufactured by Hangzhou LMenergy solution Lighting Co. LTD.  
 U.S. Patent Number: 9046244 / 9322532

# Hangzhou LMenergysolution Lighting Company, Ltd.

## LMK (Internal Driver) 8' Strip Fixture Retrofit Installation Instructions

### SAFETY INSTRUCTIONS AND WARNINGS

- When using electrical equipment, basic safety precautions should always be observed.
- Installation should only be conducted by a qualified electrician in accordance with NEC and any relevant local codes.
- Risk of fire or electric shock. Retrofit kit installation requires knowledge of luminaires electrical system. If not qualified, do not attempt installation. Contact a qualified electrician.
- Do not make or alter any open holes in the enclosure of wiring or electrical components during kit installation.
- To prevent wiring damage or abrasion, do not expose wiring to edges of sheet metal or other sharp objects.
- WARNING - This is a current rated device. Use in applications involving amperage beyond its rating can be dangerous and cause electrical fires.
- DANGER - Never remove wires from product as contact with electricity can cause serious injury or death. Follow NEC and Local Jurisdiction requirements when installing this kit.
- SAFETY NOTICE - Improperly installed electrical wiring can be dangerous and cause electrical fires. This product must be used in accordance with the current rating and wire sizes listed. Consult local building code before doing any electrical work.

### ADDITIONAL INFORMATION


Additional installation and warranty information may be found at [www.ledstick.net/resources](http://www.ledstick.net/resources).

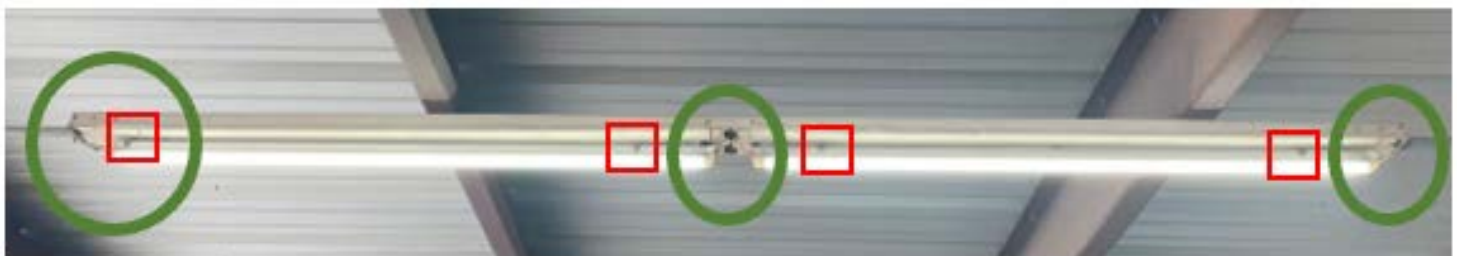
### PREPARATION - REMOVE EXISTING PARTS

1. Turn off power at the Circuit Breaker
2. Remove the existing tubes and the first belly pan cover of a run.
3. Disconnect the ballast wires from the incoming electrical line and if required, remove the ballast completely. You do not need to remove the existing tombstones.

### INSTALLING YOUR LMK STRIP FIXTURE RETROFIT

1. Connect the LM3PW power whip of the to the incoming power (110V-277V). Wire dashed black lines connects to the Hot. White to Neutral.
2. Replace the belly pan cover.
3. Using self-tapping screws, secure two of the optional LMK Clip Only to the belly pan cover, for each LMK.
4. Plug the clip end of the LM3PW power whip in to the first LMK lamp. If additional LMK lamps are to be connected, install the next two LMK Clip Only. Plug the LM6JW jumper whip into the opposite end of the first LMK lamp.
5. Plug the jumper whip into the second LMK and snap the second LMK into second set of LMK Clip Only.
6. Repeat Steps 3-5 up to the maximum 4.5-amp load allowed.
7. LMK can be connected up to a maximum of 4.5 amps on the LM3PW power whip.
  - a 120 Volt = Max of 26 LMK418
  - b 277 Volt = Max of 66 LMK418

 2 x clips tec screwed to belly pan cover for each LMK  
Magnet clips are intended for use when behind a lens



Power whip  
connects to  
LMK

6" jumper  
connects LMKs

Connect  
additional  
LMKs using 6"  
jumpers

Manufactured by:  
Hangzhou LMenergysolution Lighting Company, Ltd  
Distributed by:  
LED Stick Company  
Florence, Alabama